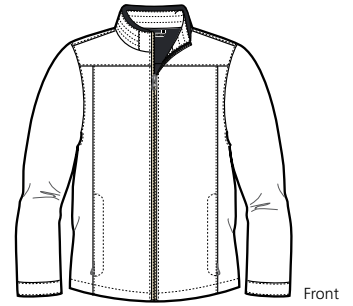
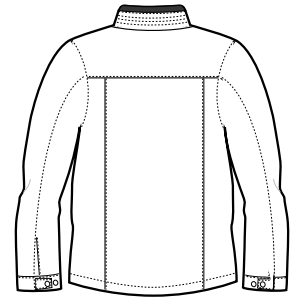


# Successor™ Jacket

PORT | AUTHORITY®



Front



Back

## J701

- \* 100% polyester with PU coating
- \* Polyester lining throughout
- \* Stowaway hood in cadet collar with hook and loop closure
- \* Black contrast on collar
- \* Interior zippered pocket

### Care Instructions:

Machine wash cold  
Separately, gentle cycle  
Do not Bleach  
Do not tumble dry or dry clean

### Finished Measurements in Inches

Size	XS	S	M	L	XL	2XL	3XL	4XL
Chest	41"	44"	47"	50"	53"	56"	60"	64"
Body	28 1/2"	29"	29 1/2"	30"	30 1/2"	31"	31 1/2"	32"
Sleeve	33 3/4"	34 1/2"	35 1/4"	36"	37"	37 3/4"	38 1/2"	40"

Chest width measured 1" below arm hole. Body length measured from high point shoulder seam to hem.  
Sleeve length measured from CB neck across shoulder to sleeve hem.

### Colors

	Black
	True Navy
	Stone
	Engine Red
	Dark Chocolate
	Estate Blue

### Please Note:

Colors shown are approximate and for reference only. For closest match see PMS colors, or for exact match, returnable samples and grommeted samples are available.

### Color Chart

Colors	Black	True Navy	Stone	Engine Red	Dark Chocolate	Estate Blue
Textile PMS	No Match	No Match	No Match	No Match	No Match	No Match
General PMS	ProBlk C	432 C	7536 C	207 C	No Match	648 C